

White City Township



2008

Back to the 50's

Bear Park --August 16th -- 3:00 to 10:00

Our community had its birth in 1955. It was a new beginning for many families. They came from all walks of life to settle the south east portion of the valley. They fought many political battles and in many wars to find themselves in what many now describe as an enclave in Sandy. Once upon a time they even had an election to change the name to Altamont. I guess it failed. Now many people around the state of Utah equate White City Folk with idealistic, tenacious, independent souls who fight for what they believe in. This year on capital hill some Holladay citizens were proud to be mistakenly identified as White City citizens.

They wore it as a badge of honor.

Several have shared some of the history with members of the community council. We have a few pictures to place on a walk down memory lane banner. We know the bear at Bear Park was sculpted by a local resident. We know that youth baseball in this part of the valley had its roots in White City. One of our more famous residents Ron Yengich is one of baseball's greatest fans. If you are aware of any other famous or infamous citizens who have their roots in our community please share their stories so we can honor them on the 16th of August.

Events planned for kids of all ages: Fun Services midway games, miniature golf, climbing things, sliding things, crafts, art, dunk tank, two legged sack races and many more.

Salt Lake County: Fire, SWAT and narcotics dogs will be available for lots of Ooh's and Aah's.

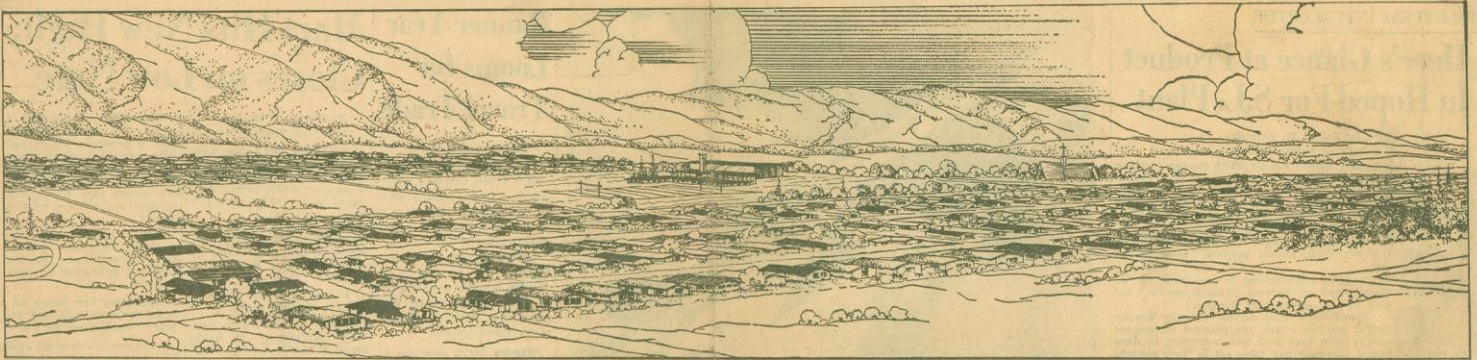
Child safety programs: will be there to help you use the identifying services for all your kids, grandkids and in some cases great grandkids.

Space for vendors and crafters available on a first come first basis. To register for space contact Paulina Flint at 571-5257. Cost per 10'x10' area will be \$25.00.

****Those interested in organizing a 5K run the morning of the 16th of August please contact Paulina Flint at 571-5257.**

We also need volunteers to manage some of the fun and games from 3:00 thru 8:00 PM. We will run two shifts of 2 people per shift per game. That way everyone will be able to participate in having fun. To volunteer and share the fun please call Paulina at 571-5257.

**It is time to share the good times close to home!
Let's Play! Email your stories and enter to win prizes!**



View of part of the 50 million dollar housing subdivision and Kenneth L. White and Associates. The 1,200-acre area is bounded by 7th East on the west, 165th South on south, 94th South on north, extends beyond 13th East St. on the east. Some 4,500 homes costing between \$3,500 and \$20,000 are planned. Other builders are invited to join in erection of three bedroom brick homes.

4,500 HOMES IN 'ALTA BENCH'

\$50 Million Subdivision Work Begins

A 4,500 home subdivision valued at 50 million dollars is projected at the "Alta Bench" area near Sandy, Salt Lake County, it was announced Saturday.

Developers are Magna Investment and Development Co., and Kenneth L. White Associates.

It is the single largest residential housing project outlined in Utah history.

Principals in the program began optioning the 1,200-

acre area three years ago in anticipation of home construction starting Saturday.

"Initial development will be handled by Cannon-Papanikolas Construction Co., and the Kenneth L. White Construction Co.," an announcement by the firms said. Both companies pioneered development of the Canyon Rim subdivision on the east bench.

Cannon-Papanikolas has been active in building in the Cottonwood Meadows and Greenfield Village, near Salt Lake City and at the Oquirrh Hills subdivision at Magna.

Mr. White will develop his part of Alta Bench as "White City," it was announced.

"IT IS OUR belief that if the Salt Lake Valley is to encourage industry to come in and set up shop, we must provide adequate housing and shopping facilities for the many thousands to be employed."

Provision is being made in the subdivision for sites for churches of various denominations.

Jordan School District already has a sizable tract within the Alta Bench area for development of school plants.

A large area has been reserved for a modern, central shopping and periphery business center.

Construction of three-bedroom, modern brick homes with attached carports or garages is beginning near 7th East.

This will place residents within walking distance of "new

and modern shopping and education centers" in the region.

All homes will have basements.

It is contention of the builders that "home owners will be within a 20-minute hub of all the business industries surrounding the area and only 20 minutes from downtown Salt Lake City and suburban Sugar House. Main access roads, including 13th East and 9th East, lead into the subdivision, while State Street is only three minutes away," they said.

THE DEVELOPERS have obtained a certificate of convenience and necessity from the Utah Public Service Commission for the White City Water Corp., which has obtained sufficient water for 2,000 homes in drilling of one well.

Three additional wells are scheduled.

The erection of a 750,000-gallon tank serving the area has been completed and two more tanks are projected.

Lots will average between 80 by 125 feet.

The Cannon-Papanikolas Construction Co. will name streets in its share of the subdivision after old mines, mining claims, personalities and places of interest in the Alta mining district—now a world-famous ski resort.

Participants in Cannon-Papanikolas Construction include John E., Nick E., and Gus E. Papanikolas and E. L. Cannon.

Development of a nine-hole golf course in an area within the proposed subdivision not suitable to residential construction is being considered.

Upper Tieup 16c Boost

fining plants have stopped shipments from this major factor in the lead trade.

The union also struck plants of Anaconda's subsidiary, the American Brass Co., at Buffalo, N.Y., and Torrington, Conn. However, Anaconda's copper, lead and zinc mines and plants in Montana have remained open. Butte miners will meet Sunday to consider the company's offer of 10 cents more an hour.

The union has been asking 20 cents and fringe benefits.

The week-old strikes have resulted in the loss of about 14,000 tons of copper at a time when the supply situation already is tight.

The wire and cable section of the National Electrical Manufacturers Assn. urged the government to allocate copper from its stockpiles to hard-pressed industrial users. In a wire to

State Calls Bids